

Urban System



Why NOVO?

The most experienced team, In-House Research and Development, innovative technology, superb raw materials, we offer the best in every class:



Image Quality



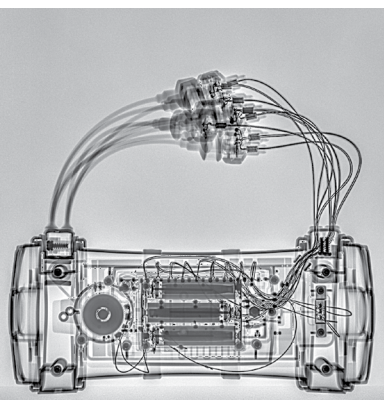
Reliability



Ease of Use



Professional Support

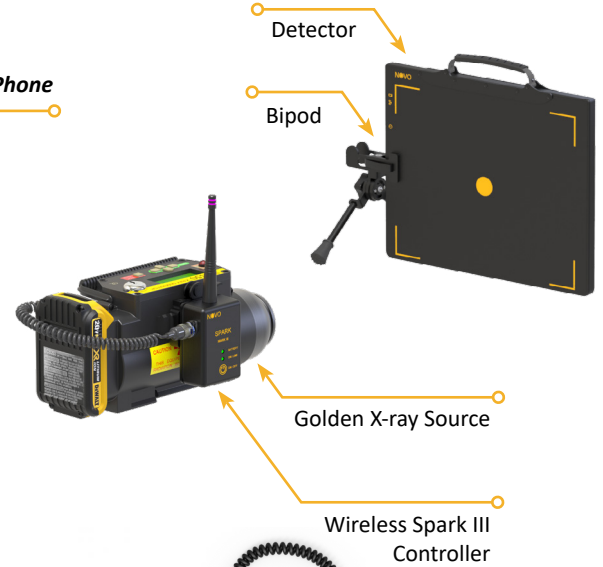
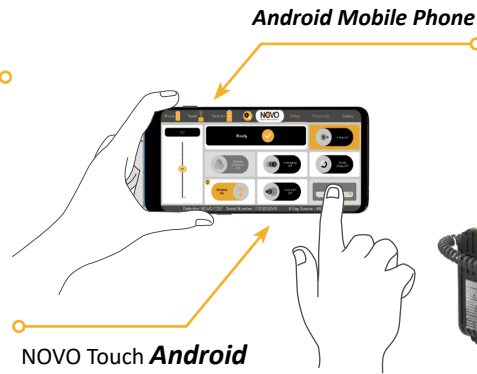


Urban System

Windows Option:



Android Mobile Phone Option:



Wired Operation:

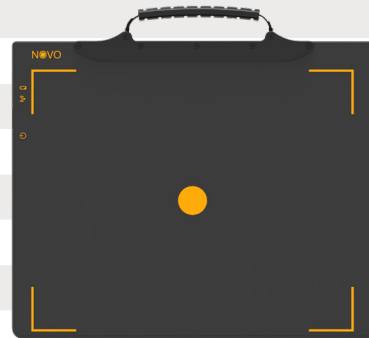


Components

Detector

- Lightest in the market
- Unmatched image quality

Detector Model	NOVO 15WS	
Steel Penetration *	3.5" (90mm)	
Detector Weight	3.5 lbs. (1.6kg)	
Detector Load Proof	660 lbs. (300kg)	
Detector Imaging Area	9.1" x 11.2" (23.1cm x 28.4cm)	
Detector Size	10.6" x 12.9" (26.9cm x 32.9cm)	
Active Area (Imaging Area / Detector Size)	74% Active Area	
Detector Drop Test	40" (100cm)	
Detector Thickness	0.6" (15.6mm)	
Bit Depth	16 bit latest generation	NOVO 15WS 3.5 lbs. (1.6kg)
Connector	Magnetic Dual Direction Connector	



* Tested with Golden XRS-3 at ~10" (25cm)

Components

Spark III

- 0.7 lbs. (0.3kg)
- 6 Hours built-in battery operation
- Wireless Up to 400m Line of Sight
- Supports All Golden Sources
- Quick connection to source
- MIL-DTL 38999 connectors
- Weatherproof design
- LED Indications
- Supports Golden On/Off & battery status info



Tablets (Most popular)



Panasonic Toughbook® CF-33

Panasonic Toughpad™ FZ-G1

Samsung S21

	Panasonic Toughbook® CF-33	Panasonic Toughpad™ FZ-G1	Samsung S21
Screen Size	12"	10.1"	6.2"
Screen Resolution	2160 x 1440	1920 x 1200	2400 x 1080
Screen Brightness (NIT)	1200	800	850
Touch Screen	✓	✓	✓
Operating System	Windows 10	Windows 10	Android

*Additional tablets and laptops supported

X-Ray Sources

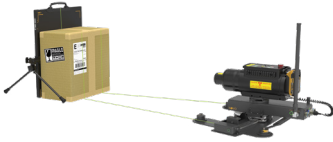


	Litex	XR150	XR200	XRS-3	XRS-4
KVP	120	150	150	270	370
Weight	5.6 lbs.(2.5kg)	5.9 lbs. (2.7 kg)	10.7 lbs. (4.8 kg)	11.8 lbs. (5.3 kg)	18.3 lbs. (8.3 kg)
Size	11.7" x 3.2" x 4.7" (29.9cm x 8.2cm x 12cm)	10.4" x 3.5" x 4.7" (26.6cm x 9cm x 12.1cm)	10.7" x 4.3" x 5.8" (27.2cm x 10.8cm x 14.8cm)	14.2" x 4.3" x 5.8" (36.1cm x 10.9cm x 14.8cm)	19.3" x 4.8" x 7.1" (48.9cm x 12.2cm x 17.9cm)

Accessories

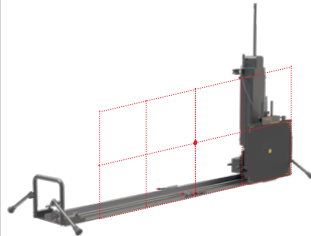
3D ARC

3D Imaging with exact X, Y, Z measurements



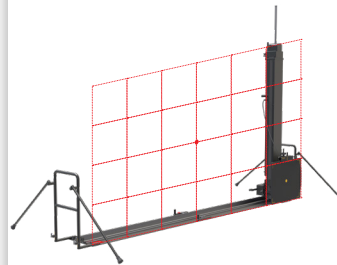
Folding Slider L

Ideal for screening large objects



Folding Slider XXL

Super sized, ideal for screening XXL objects



Eagle

Extremely long range wireless transceiver up to 3.3km (2 miles) LOS



Extension Cables

Available at 50m, 100m and 150m for a total of 300m



Armor

Additional mechanical protection to the Detectors



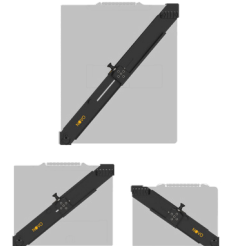
Soft Protective Cover

Additional weather & impact protection



Tripod Mount

Firmly holds the detector and provides various positioning options



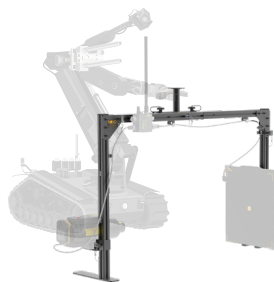
Lookout

Organic detection, live Video & Audio



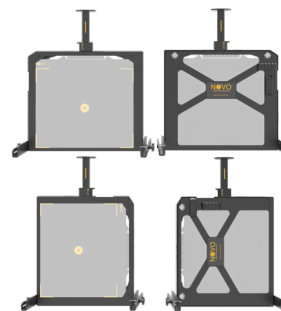
Robot C-Arm

Detector and X-Ray Holder



Robot Detector Frame

Lightweight, shock absorbing



Wireless Super Ranger

Increases wireless distance and stability



Compatible with the XTK® Software

GSA *Advantage!*

Contract # **GS-07F-163DA**