

Rover II System



Why NOVO?

The most experienced team, In-House Research and Development, innovative technology, superb raw materials, we offer the best in every class:



Image Quality



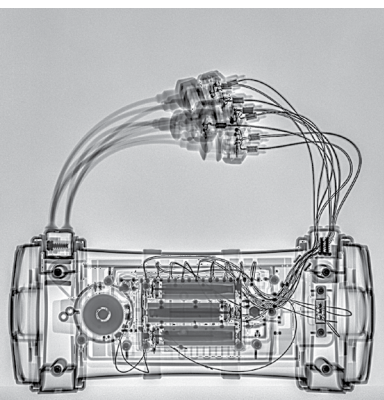
Reliability



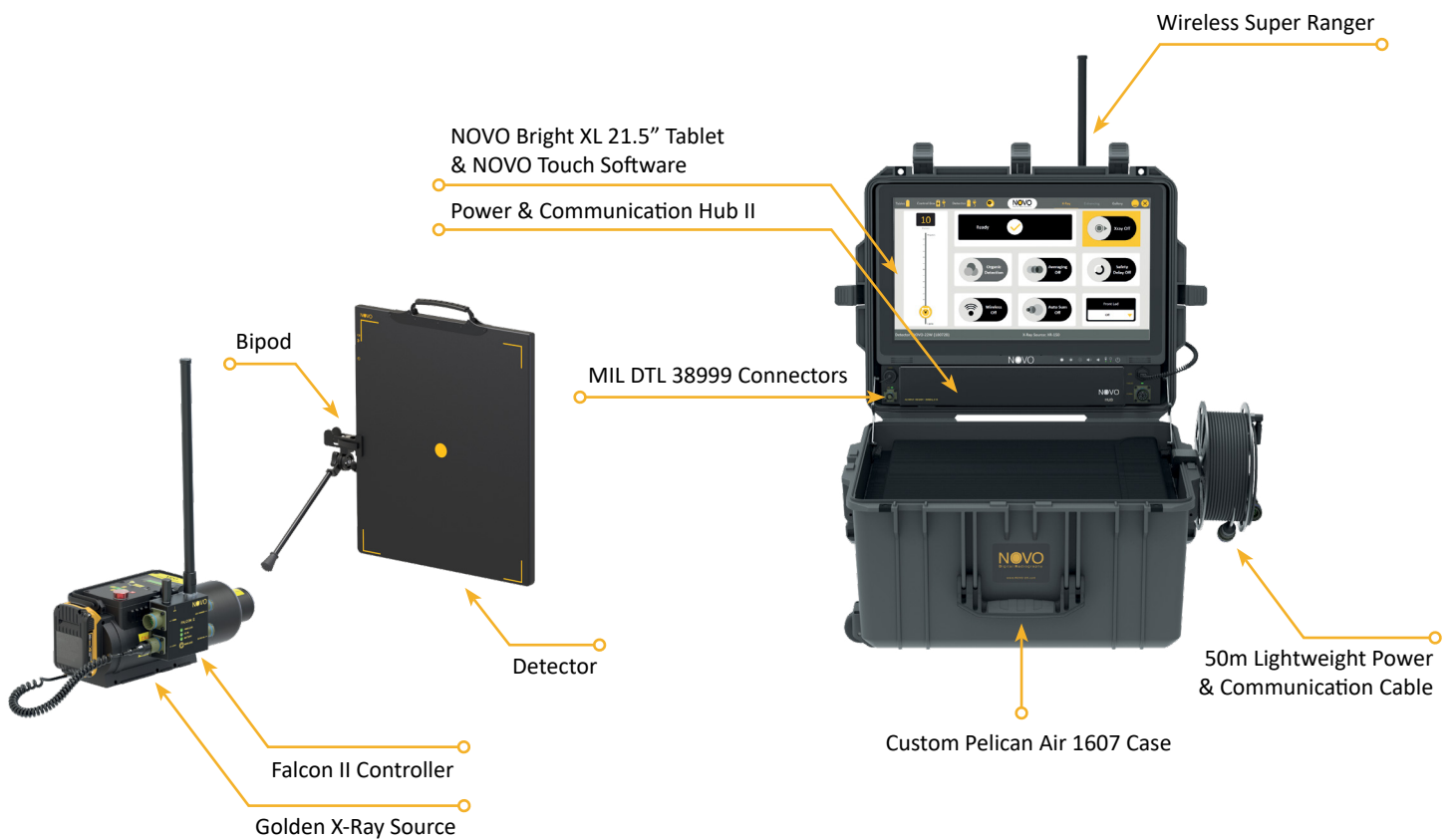
Ease of Use



Professional Support



Rover II System



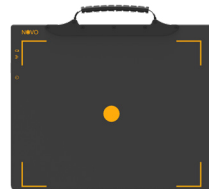
Components

Detector Options

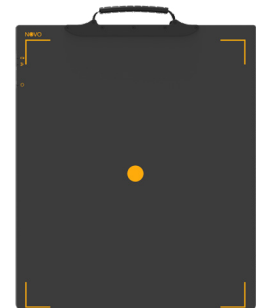
- Lightest in the market
- Unmatched image quality



NOVO 12SF
2.2 lbs. (1kg)



NOVO 15WS
3.5 lbs. (1.6kg)



NOVO 22WS
6.1 lbs. (2.8kg)

Detector Model	NOVO 12SF	NOVO 15WS	NOVO 22WS
Steel Penetration *	3.5" (90mm)	3.5" (90mm)	3.5" (90mm)
Detector Weight	2.2 lbs. (1kg)	3.5 lbs. (1.6kg)	6.1 lbs. (2.8kg)
Detector Load Proof	440 lbs (200kg)	660 lbs. (300kg)	660 lbs. (300kg)
Detector Imaging Area	6.75" x 10.1" (17.2cm x 25.8cm)	9.1" x 11.2" (23.1cm x 28.4cm)	13.9" x 16.7" (35.5cm x 42.6cm)
Detector Size	7.7" x 11.1" (19.5cm x 28.2cm)	10.6" x 12.9" (26.9cm x 32.9cm)	15.2" x 18.3" (38.5cm x 46.5cm)
Active Area (Imaging Area / Detector Size)	80% Active Area	74% Active Area	85% Active Area
Detector Drop Test	40" (100cm)	40" (100cm)	40" (100cm)
Detector Thickness	0.6" (15mm)	0.6" (15.6mm)	0.6" (15.6mm)
Bit Depth	16 bit latest generation	16 bit latest generation	16 bit latest generation
Connector	Magnetic Dual Direction Connector	Magnetic Dual Direction Connector	Magnetic Dual Direction Connector

* Tested with Golden XRS-3 at ~10" (25cm)

Components

Falcon II

- 2lbs (0.9 kg)
- Unlimited operation with AC (POE)
- 6+ hours Built-in Battery
- Wired/Semi Wired
- Wireless Up to 500m Line of Sight
- Supports All Golden Sources
- Quick connection to source
- MIL-DTL 38999 connectors
- Weatherproof design
- GPS
- LED Indications
- Supports Parallel Multi Location Control & Display
- Supports Golden On/Off & battery status info



* NOVO Control Box can be ordered instead of the Falcon II

Tablets (Most popular)



	NOVO Bright XL	NOVO Bright L	Panasonic Toughbook® CF-33	Panasonic Toughpad™ FZ-G1	Samsung S21
Screen Size	21.5"	17"	12"	10.1"	6.2"
Screen Resolution	1920 X 1080	1920 x 1200	2160 x 1440	1920 x 1200	2400 x 1080
Screen Brightness (NIT)	1500 (!) Super Brightness	1500 (!) Super Brightness	1200	800	850
Touch Screen	✓	✓	✓	✓	✓
Operating System	Windows 10	Windows 10	Windows 10	Windows 10	Android

*Additional tablets and laptops supported

X-Ray Sources

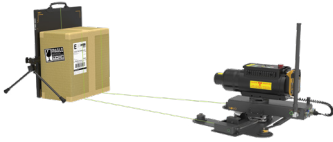


	Litex	XR150	XR200	XRS-3	XRS-4
KVP	120	150	150	270	370
Weight	5.6 lbs.(2.5kg)	5.9 lbs. (2.7 kg)	10.7 lbs. (4.8 kg)	11.8 lbs. (5.3 kg)	18.3 lbs. (8.3 kg)
Size	11.7" x 3.2" x 4.7" (29.9cm x 8.2cm x 12cm)	10.4" x 3.5" x 4.7" (26.6cm x 9cm x 12.1cm)	10.7" x 4.3" x 5.8" (27.2cm x 10.8cm x 14.8cm)	14.2" x 4.3" x 5.8" (36.1cm x 10.9cm x 14.8cm)	19.3" x 4.8" x 7.1" (48.9cm x 12.2cm x 17.9cm)

Accessories

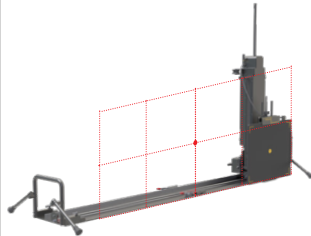
3D ARC

3D Imaging with exact X, Y, Z measurements



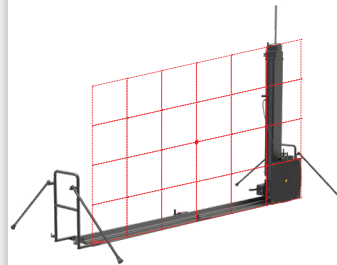
Folding Slider L

Ideal for screening large objects



Folding Slider XXL

Super sized, ideal for screening XXL objects



Eagle

Extremely long range wireless transceiver up to 3.3km (2 miles) LOS



Extension Cables

Available at 50m, 100m and 150m for a total of 300m



Armor

Additional mechanical protection to the Detectors



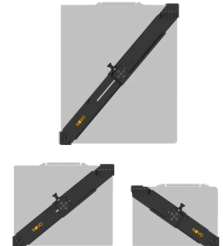
Soft Protective Cover

Additional weather & impact protection



Tripod Mount

Firmly holds the detector and provides various positioning options



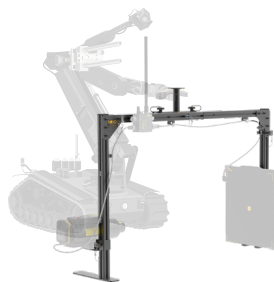
Lookout

Organic detection, live Video & Audio



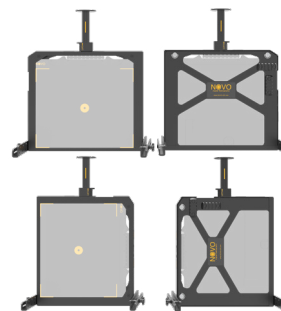
Robot C-Arm

Detector and X-Ray Holder



Robot Detector Frame

Lightweight, shock absorbing



Wireless Super Ranger

Increases wireless distance and stability



Compatible with the XTK® Software

GSA *Advantage!*

Contract # **GS-07F-163DA**