

The Leaders in Portable X-Ray Systems

# Discovery III System



**NOVO Mesh Technology -**  
Unmatched Wireless Performance



## Top of the Line System in a Rugged Pelican Case

- 12/15/22WN Detector options
- Wired & wireless operation modes
- 21.5" 1500 NIT Sun-Readable touch tablet
- MIL-DTL 38999 connectors
- Supports multi-tablet control & display
- Includes NOVO Touch Pro full Software package

# System Overview



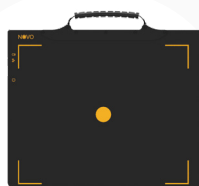
Available with  
12SFN/12HRN/15WN/22WN Detectors



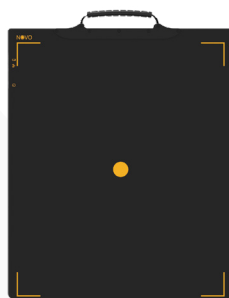
NOVO 12SFN



NOVO 12HRN



NOVO 15WN



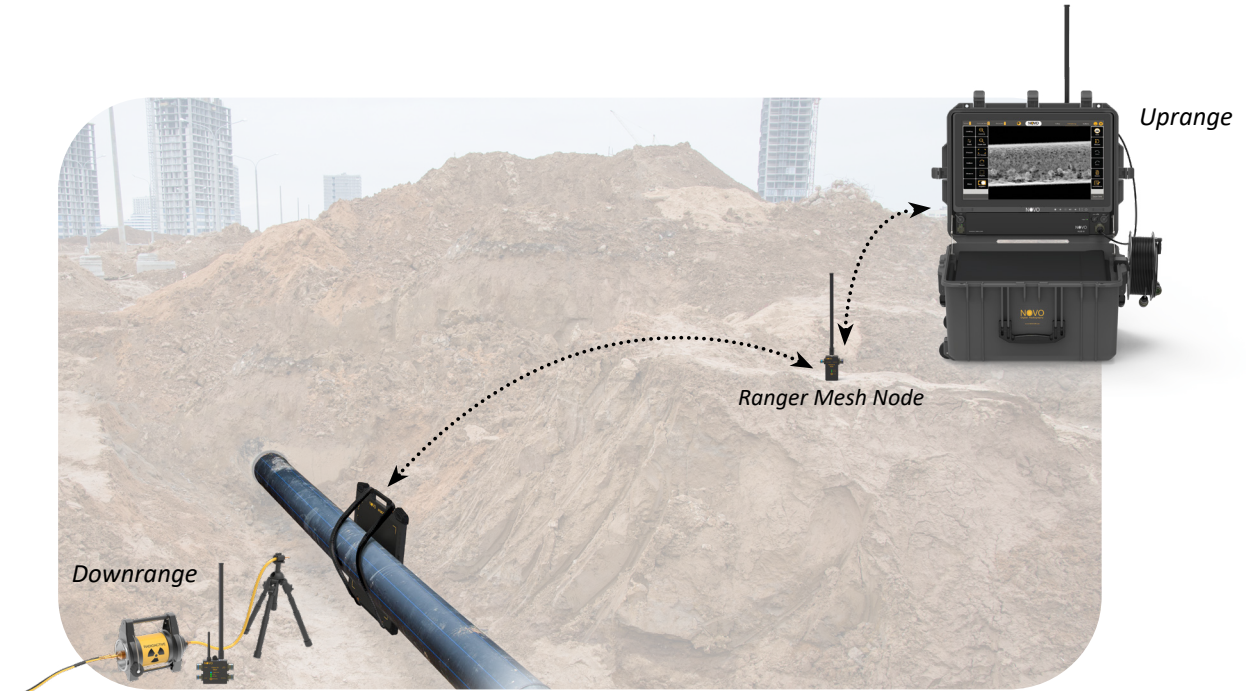
NOVO 22WN



# NOVO Wireless Mesh Technology

Unique technology providing unmatched wireless performance:

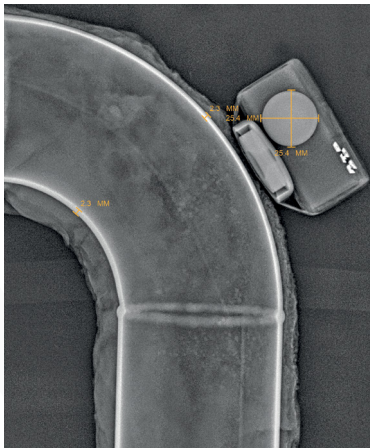
- High signal stability in crowded RF environments, such as urban locations and areas with strong electromagnetic fields
- Up to 0.6 miles (1000m) LOS between wireless devices; longer range when elevating on tripods - up to 1.8 miles (3km)
- Multiple wireless devices allow for working "around corners", obstacles and underground operations
- Each wireless unit becomes a relay (repeater), which automatically connects and automatically relays wireless signals efficiently



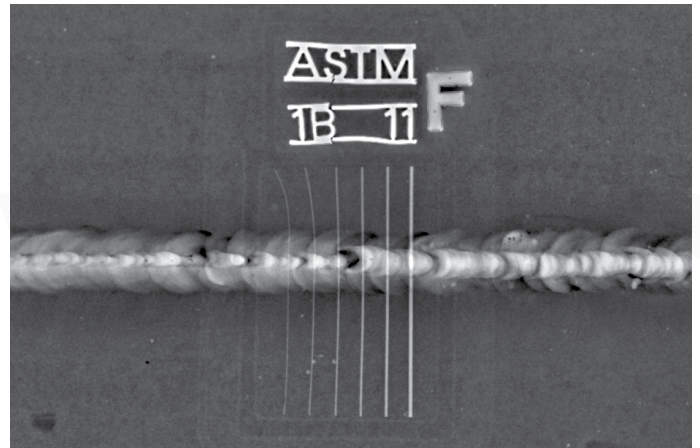
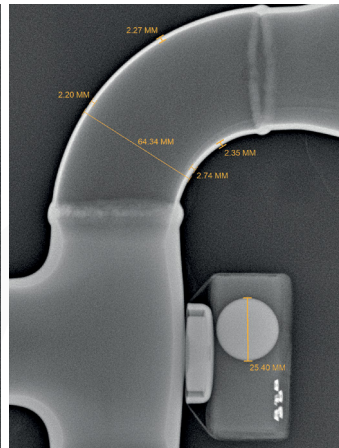
## NOVO Touch Pro Software

### Key Software Features

- GENIE - One Touch Enhancement
- Auto Wall Thickness Calibration and Measurement
- Auto Basic Spatial Resolution (SRb calculator)
- Pixel Map
- Line Profile
- DWT (Double Wall Thickness Technique)
- Manual & Automatic Image Stitching
- Averaging (Frame Integration)
- Image Statistics
- 1600% Zoom
- Annotations - Text, highlight, arrows, etc. and many more....



Wall Thickness Measurements



Weld Quality Examination



# Components

## Falcon III Mesh Controller

- Full control of industrial & Golden Generators
- MIL-DTL 38999 connectors
- Only 2 lbs. (900 grams)
- Unlimited operation with AC (POE)
- 6 hours Built-in Battery
- Wired/Semi Wired /Wireless Communication
- Wireless Up to 0.6 miles (1000m) Line of Sight
- Controls All Golden Generators
- Weatherproof design
- LED Indications
- Supports Parallel Multi Location Control & Display



## Detector Options

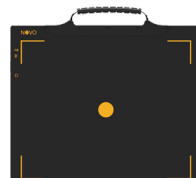
- Internally shielded - long life span
- High radiation resistance
- Low internal scattering- higher image quality



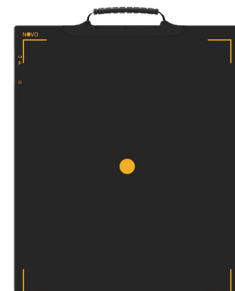
NOVO 12SFN  
2.6 lbs. (1.2kg)



NOVO 12HRN  
5.3 lbs. (2.4kg)



NOVO 15WN  
5.3 lbs. (2.4kg)



NOVO 22WN  
9.4 lbs. (4.3kg)

Detector Model	NOVO 12SFN	NOVO 12HRN	NOVO 15WN	NOVO 22WN
Detector Imaging Area	6.75" x 10.1" (17.2cm x 25.8cm)	6.8" x 9.0" (17.3cm x 22.9cm)	9.1" x 11.2" (23.1cm x 28.4cm)	14.0" x 16.8" (35.6cm x 42.7cm)
Active Area (Imaging Area / Detector Size)	80% Active Area	74% Active Area	74% Active Area	85% Active Area
Detector Weight (Including Battery)	2.6 lbs. (1.2kg)	5.3 lbs. (2.4kg)	5.3 lbs. (2.4kg)	9.4 lbs. (4.3kg)
Detector Load Tolerance	440 lbs. (200kg)	660 lbs. (300kg)	660 lbs. (300kg)	660 lbs. (300kg)
Detector Drop Test	31.5" (80cm)	27.5" (70cm)	20" (50cm)	20" (50cm)
Detector Thickness	0.6" (15mm)	1.1" (27.5mm)	0.6" (15.6mm)	0.6" (15.6mm)
Bit Depth	16 bit latest generation	16 bit latest generation	16 bit latest generation	16 bit latest generation
Life Span	Over 100K rem*	Over 100K rem*	Over 100K rem*	Over 100K rem*

\* Over 100K rem of direct exposure on the detector

# Components

## Tablets (Most popular)



	NOVO Bright XL	NOVO Bright L	NOVO Bright S	Panasonic Toughbook® CF-33	Panasonic Toughpad™ FZ-G2	Samsung S22
Screen Size	21.5"	17"	10.1"	12"	10.1"	6.1"
Screen Resolution	1920 x 1080	1920 x 1200	1920 x 1200	2160 x 1440	1920 x 1200	2340 x 1080
Screen Brightness (NIT)	1500 (!) Super Brightness	1500 (!) Super Brightness	1500 (!) Super Brightness	1200	1000	980
Touch Screen	✓	✓	✓	✓	✓	✓
Operating System	Windows 10	Windows 10	Windows 10	Windows 10	Windows 10	Android
Battery Operation Time at 800 NIT	6+ hours	7+ hours	6+ hours	8 hours	5+ hours	10+ hours

\*Additional tablets and laptops supported

## Power & Communication Hub III

- Provides both power and data communication
- MIL-STD 38999 Connectors
- USB 3.0 Fast Data Ports – USB C, USB A
- HDMI Connection



## X-Ray Generators



	Litex	XR150	XR200	XRS-3	XRS-4
KVP	120	150	150	270	370
Weight	5.6 lbs. (2.5kg)	5.9 lbs. (2.7 kg)	10.7 lbs. (4.8 kg)	11.8 lbs. (5.3 kg)	18.3 lbs. (8.3 kg)
Size	11.7" x 3.2" x 4.7" (29.9cm x 8.2cm x 12cm)	10.4" x 3.5" x 4.7" (26.6cm x 9cm x 12.1cm)	10.7" x 4.3" x 5.8" (27.2cm x 10.8cm x 14.8cm)	14.2" x 4.3" x 5.8" (36.1cm x 10.9cm x 14.8cm)	19.3" x 4.8" x 7.1" (48.9cm x 12.2cm x 17.9cm)

\*Supports Additional X-Ray Generators

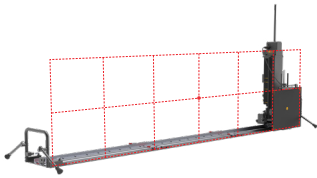
# Accessories



## Supporting NOVO Mesh Technology

### Folding Slider L

Ideal for screening large objects

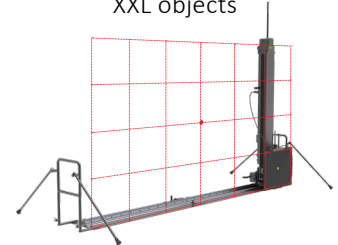


Elevated Mode



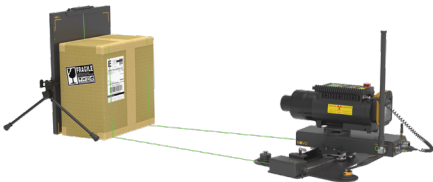
### Folding Slider XXL

Super sized, ideal for screening XXL objects



### 3D Arc

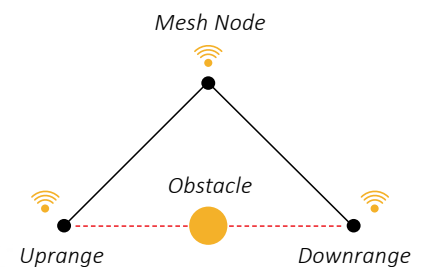
3D automated imaging with exact X, Y, Z measurements



### Additional Ranger Mesh Node



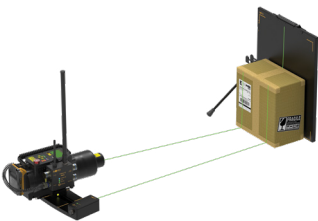
Multiple Nodes allow for working "around corners", obstacles and subterranean operations.



## Additional Accessories

### 3D Arc Lite

Small 3D Imaging with exact X, Y, Z measurements



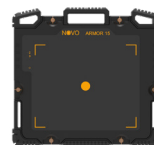
### Extension Cables

Available at 50m, 100m and 150m for a total of 300m



### Protective Casing

Armor



Soft Cover



### Diagonal Tripod Mount

Firmly holds 12/15/22" detectors and provides various positioning options



### Lookout

Organic detection, live Video & Audio



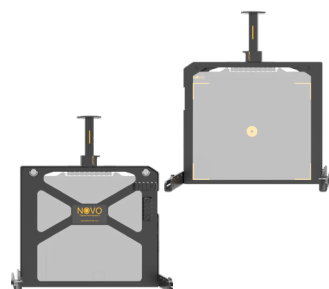
### Wireless X-Ray

Enables control of X-Ray sources without an X-Ray sync cable



### Robot Detector Frame

Lightweight, shock absorbing



### Robot C-Arm

Detector and X-Ray Holder



For detailed information, please review the [NDT Accessories brochure](#).